

# EAST UNIT F

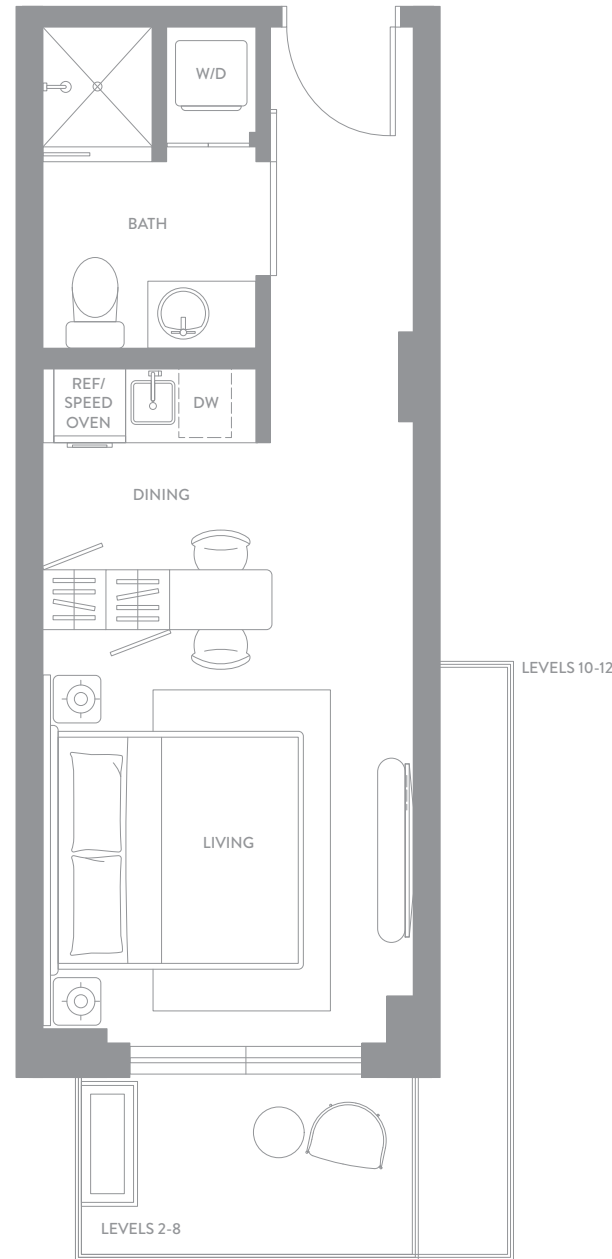
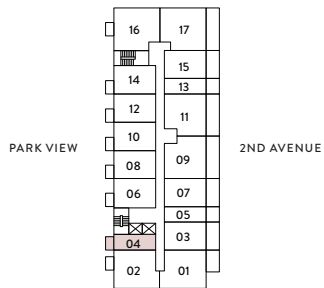
STUDIO  
1 BATHROOM

LINE 04  
FLOORS 02 TO 12

INTERIOR  
330 sf | 31 m<sup>2</sup>  
347 sf | 32 m<sup>2</sup>

EXTERIOR  
57 sf | 5 m<sup>2</sup>  
119 sf | 11 m<sup>2</sup>

TOTAL  
387 sf | 36 m<sup>2</sup>  
466 sf | 43 m<sup>2</sup>



domus<sup>®</sup>

F L A T S

BRICKELL PARK

domusbrickellpark.com | 786.697.0651 | 1611 SW 2nd Avenue, Miami, FL 33129

EXCLUSIVE SALES & MARKETING BY CERVERA<sup>®</sup> REAL ESTATE • 1969 DEVELOPED BY NORTH DEVELOPMENT

ORAL REPRESENTATIONS CANNOT BE RELIED UPON AS CORRECTLY STATING THE REPRESENTATIONS OF THE DEVELOPER. FOR CORRECT REPRESENTATIONS, MAKE REFERENCE TO THIS BROCHURE AND TO THE DOCUMENTS REQUIRED BY SECTION 718.503, FLORIDA STATUTES, TO BE FURNISHED BY A DEVELOPER TO A BUYER OR LESSEE. Stated square footages and dimensions of residences are measured to the exterior boundaries of the exterior walls and in fact vary from the square footages and dimensions that would be determined by using the description and definition of the "Unit" set forth in the Declaration of Condominium, which generally only includes the interior airspace between the perimeter walls and excludes all interior structural components and other common elements. The method of measurement used in these materials is generally used in sales materials and is provided to allow a prospective buyer to compare the Units with units in other projects that utilize the same method. Refer to Exhibit "2" to the Declaration of Condominium for the unit dimensions calculated based on the description and definition of the "Unit" set forth in the Declaration. Terraces are not part of the Unit. Measurements of rooms set forth on this floor plan are generally taken at the farthest points of each given room (as described above and as if the room were a perfect rectangle), without regard for any cutouts or variations. Accordingly, the interior air space dimensions of the actual room will typically be smaller than the product obtained by multiplying the stated length and width. All measurements are estimates based on preliminary plans and will vary with actual construction. All floor plans, specifications and other development plans are proposed and conceptual only, and are subject to change and will not necessarily accurately reflect the final plans and specifications.

# WEST UNIT F

STUDIO  
1 BATHROOM

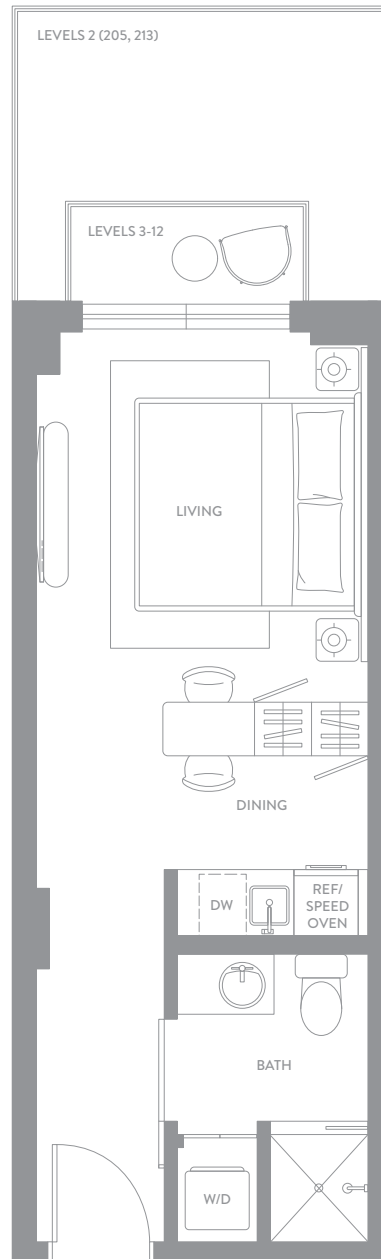
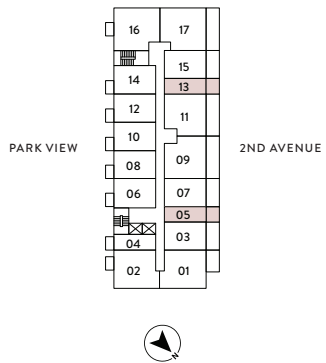
LINES 05 & 13  
FLOORS 02 TO 12

INTERIOR  
330 sf | 31 m<sup>2</sup>

EXTERIOR  
23 sf | 2 m<sup>2</sup>

TOTAL  
353 sf | 33 m<sup>2</sup>

*2nd Floor Exterior*  
Starting from 107 sf | 10 m<sup>2</sup>



domus<sup>®</sup>  
FLATS

BRICKELL PARK

domusbrickellpark.com | 786.697.0651 | 1611 SW 2nd Avenue, Miami, FL 33129

EXCLUSIVE SALES & MARKETING BY CERVERA<sup>®</sup> DEVELOPED BY NORTH  
REAL ESTATE • 1969 DEVELOPMENT

ORAL REPRESENTATIONS CANNOT BE RELIED UPON AS CORRECTLY STATING THE REPRESENTATIONS OF THE DEVELOPER. FOR CORRECT REPRESENTATIONS, MAKE REFERENCE TO THIS BROCHURE AND TO THE DOCUMENTS REQUIRED BY SECTION 718.503, FLORIDA STATUTES, TO BE FURNISHED BY A DEVELOPER TO A BUYER OR LESSEE. Stated square footages and dimensions of residences are measured to the exterior boundaries of the exterior walls and the centerline of interior demising walls between units and in fact vary from the square footages and dimensions that would be determined by using the description and definition of the "Unit" set forth in the Declaration of Condominium, which generally only includes the interior airspace between the perimeter walls and excludes all interior structural components and other common elements. The method of measurement used in these materials is generally used in sales materials and is provided to allow a prospective buyer to compare the Units with units in other projects that utilize the same method. Refer to Exhibit "2" to the Declaration of Condominium for the unit dimensions calculated based on the description and definition of the "Unit" set forth in the Declaration. Terraces are not part of the Unit. Measurements of rooms set forth on this floor plan are generally taken at the farthest points of each given room (as described above and as if the room were a perfect rectangle), without regard for any cutouts or variations. Accordingly, the interior air space dimensions of the actual room will typically be smaller than the product obtained by multiplying the stated length and width. All measurements are estimates based on preliminary plans and will vary with actual construction. All floor plans, specifications and other development plans are proposed and conceptual only, and are subject to change and will not necessarily accurately reflect the final plans and specifications.

# EAST UNIT F

STUDIO  
1 BATHROOM

ADA UNIT

LINE 04  
UNIT 904

INTERIOR  
347 sf | 32 m<sup>2</sup>

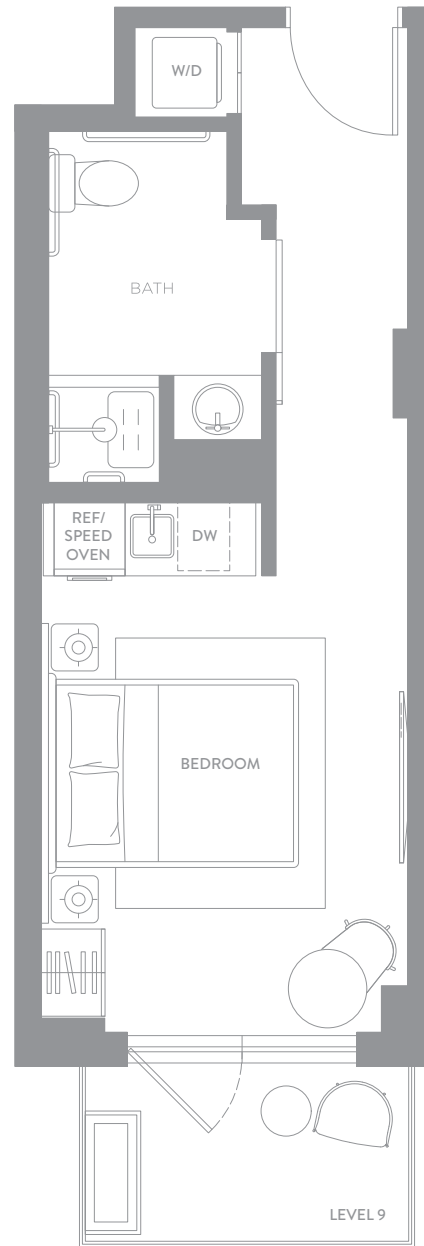
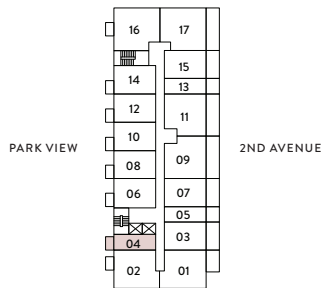
EXTERIOR  
57 sf | 5 m<sup>2</sup>

TOTAL  
404 sf | 37 m<sup>2</sup>

domus<sup>®</sup>

F L A T S

BRICKELL PARK



domusbrickellpark.com | 786.697.0651 | 1611 SW 2nd Avenue, Miami, FL 33129

EXCLUSIVE SALES & MARKETING BY **CERVERA<sup>®</sup>** REAL ESTATE • 1969 DEVELOPED BY **NORTH DEVELOPMENT**

® ORAL REPRESENTATIONS CANNOT BE RELIED UPON AS CORRECTLY STATING THE REPRESENTATIONS OF THE DEVELOPER. FOR CORRECT REPRESENTATIONS, MAKE REFERENCE TO THIS BROCHURE AND TO THE DOCUMENTS REQUIRED BY SECTION 718.503, FLORIDA STATUTES, TO BE FURNISHED BY A DEVELOPER TO A BUYER OR LESSEE. Stated square footages and dimensions of residences are measured to the exterior boundaries of the exterior walls and in fact vary from the square footages and dimensions that would be determined by using the description and definition of the "Unit" set forth in the Declaration of Condominium, which generally only includes the interior airspace between the perimeter walls and excludes all interior structural components and other common elements. The method of measurement used in these materials is generally used in sales materials and is provided to allow a prospective buyer to compare the Units with units in other projects that utilize the same method. Refer to Exhibit "2" to the Declaration of Condominium for the unit dimensions calculated based on the description and definition of the "Unit" set forth in the Declaration. Terraces are not part of the Unit. Measurements of rooms set forth on this floor plan are generally taken at the farthest points of each given room (as described above and as if the room were a perfect rectangle), without regard for any cutouts or variations. Accordingly, the interior air space dimensions of the actual room will typically be smaller than the product obtained by multiplying the stated length and width. All measurements are estimates based on preliminary plans and will vary with actual construction. All floor plans, specifications and other development plans are proposed and conceptual only, and are subject to change and will not necessarily accurately reflect the final plans and specifications.

# EAST UNIT E

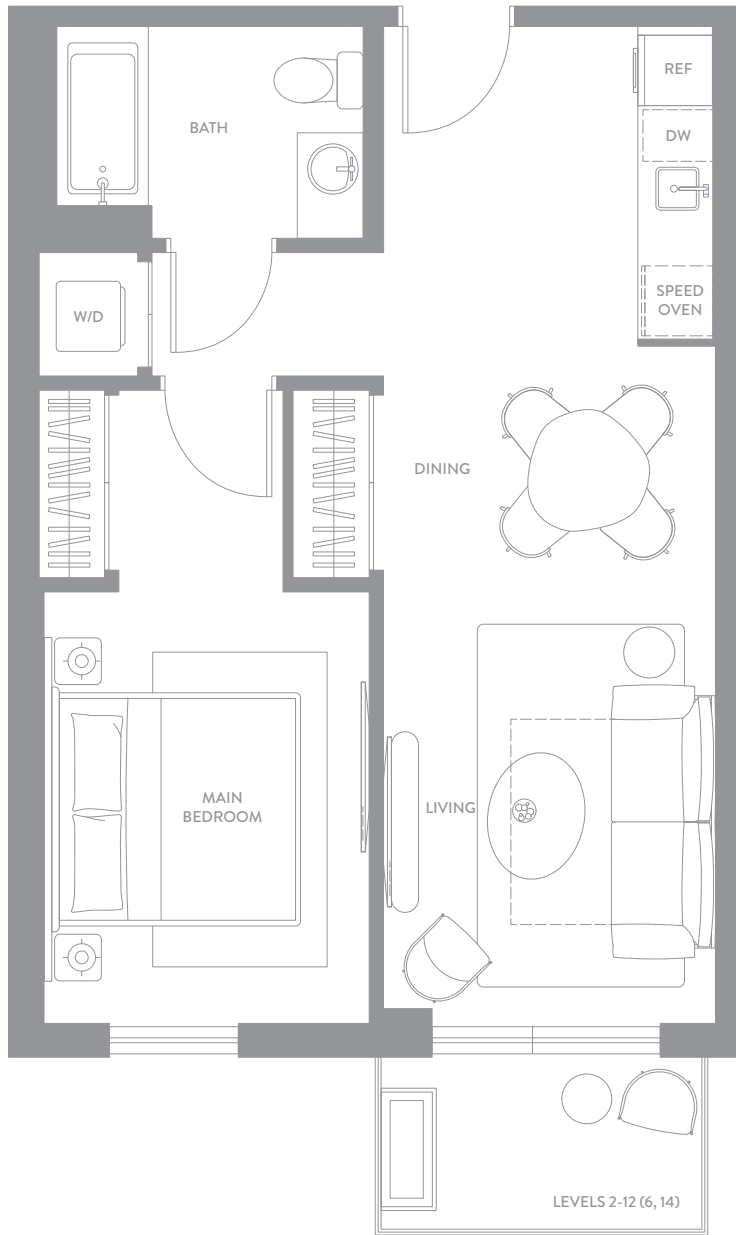
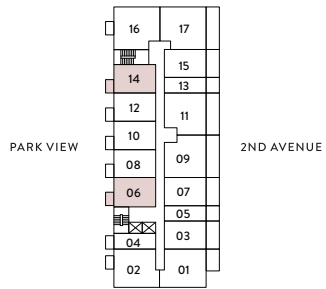
1 BEDROOM  
1 BATHROOM

LINES 06 & 14  
FLOORS 02 TO 12

INTERIOR  
600 sf | 56 m<sup>2</sup>

EXTERIOR  
57 sf | 5 m<sup>2</sup>

TOTAL  
657 sf | 61 m<sup>2</sup>



domus<sup>®</sup>

F L A T S

BRICKELL PARK

domusbrickellpark.com | 786.697.0651 | 1611 SW 2nd Avenue, Miami, FL 33129

EXCLUSIVE SALES & MARKETING BY **CERVERA<sup>®</sup>** REAL ESTATE • 1969 DEVELOPED BY **NORTH DEVELOPMENT**

ORAL REPRESENTATIONS CANNOT BE RELIED UPON AS CORRECTLY STATING THE REPRESENTATIONS OF THE DEVELOPER. FOR CORRECT REPRESENTATIONS, MAKE REFERENCE TO THIS BROCHURE AND TO THE DOCUMENTS REQUIRED BY SECTION 718.503, FLORIDA STATUTES, TO BE FURNISHED BY A DEVELOPER TO A BUYER OR LESSEE. Stated square footages and dimensions of residences are measured to the exterior boundaries of the exterior walls and the centerline of interior demising walls between units and in fact vary from the square footages and dimensions that would be determined by using the description and definition of the "Unit" set forth in the Declaration of Condominium, which generally only includes the interior airspace between the perimeter walls and excludes all interior structural components and other common elements. The method of measurement used in these materials is generally used in sales materials and is provided to allow a prospective buyer to compare the Units with units in other projects that utilize the same method. Refer to Exhibit "2" to the Declaration of Condominium for the unit dimensions calculated based on the description and definition of the "Unit" set forth in the Declaration. Terraces are not part of the Unit. Measurements of rooms set forth on this floor plan are generally taken at the farthest points of each given room (as described above and as if the room were a perfect rectangle), without regard for any cutouts or variations. Accordingly, the interior air space dimensions of the actual room will typically be smaller than the product obtained by multiplying the stated length and width. All measurements are estimates based on preliminary plans and will vary with actual construction. All floor plans, specifications and other development plans are proposed and conceptual only, and are subject to change and will not necessarily accurately reflect the final plans and specifications.

# WEST UNIT E

1 BEDROOM  
1 BATHROOM

LINES 03, 07, 15  
FLOORS 02 TO 08

## INTERIOR

600 sf | 56 m<sup>2</sup>

## EXTERIOR

34 sf | 3 m<sup>2</sup>

47 sf | 4 m<sup>2</sup>

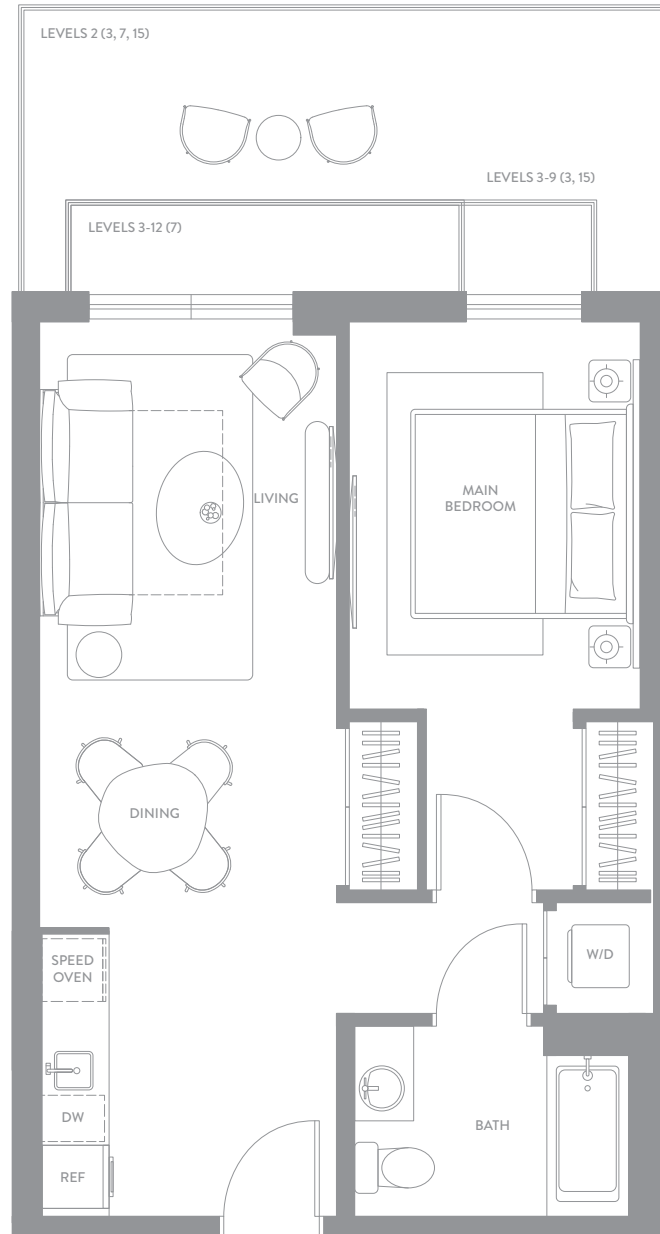
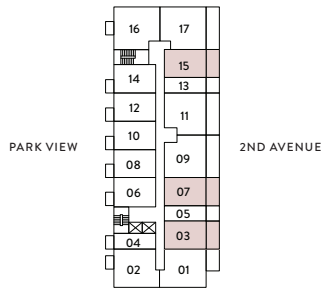
## TOTAL

634 sf | 59 m<sup>2</sup>

647 sf | 60 m<sup>2</sup>

## 2nd Floor Exterior

Starting from 199 sf | 18 m<sup>2</sup>



domus<sup>®</sup>

F L A T S

BRICKELL PARK

domusbrickellpark.com | 786.697.0651 | 1611 SW 2nd Avenue, Miami, FL 33129

EXCLUSIVE SALES & MARKETING BY **CERVERA<sup>®</sup>** REAL ESTATE • 1969 DEVELOPED BY **NORTH DEVELOPMENT**

® ORAL REPRESENTATIONS CANNOT BE RELIED UPON AS CORRECTLY STATING THE REPRESENTATIONS OF THE DEVELOPER. FOR CORRECT REPRESENTATIONS, MAKE REFERENCE TO THIS BROCHURE AND TO THE DOCUMENTS REQUIRED BY SECTION 718.503, FLORIDA STATUTES, TO BE FURNISHED BY A DEVELOPER TO A BUYER OR LESSEE. Stated square footages and dimensions of residences are measured to the exterior boundaries of the exterior walls and the centerline of interior demising walls between units and in fact vary from the square footages and dimensions that would be determined by using the description and definition of the "Unit" set forth in the Declaration of Condominium, which generally only includes the interior airspace between the perimeter walls and excludes all interior structural components and other common elements. The method of measurement used in these materials is generally used in sales materials and is provided to allow a prospective buyer to compare the Units with units in other projects that utilize the same method. Refer to Exhibit "2" to the Declaration of Condominium for the unit dimensions calculated based on the description and definition of the "Unit" set forth in the Declaration. Terraces are not part of the Unit. Measurements of rooms set forth on this floor plan are generally taken at the farthest points of each given room (as described above and as if the room were a perfect rectangle), without regard for any cutouts or variations. Accordingly, the interior air space dimensions of the actual room will typically be smaller than the product obtained by multiplying the stated length and width. All measurements are estimates based on preliminary plans and will vary with actual construction. All floor plans, specifications and other development plans are proposed and conceptual only, and are subject to change and will not necessarily accurately reflect the final plans and specifications.

# UPPER WEST UNIT E

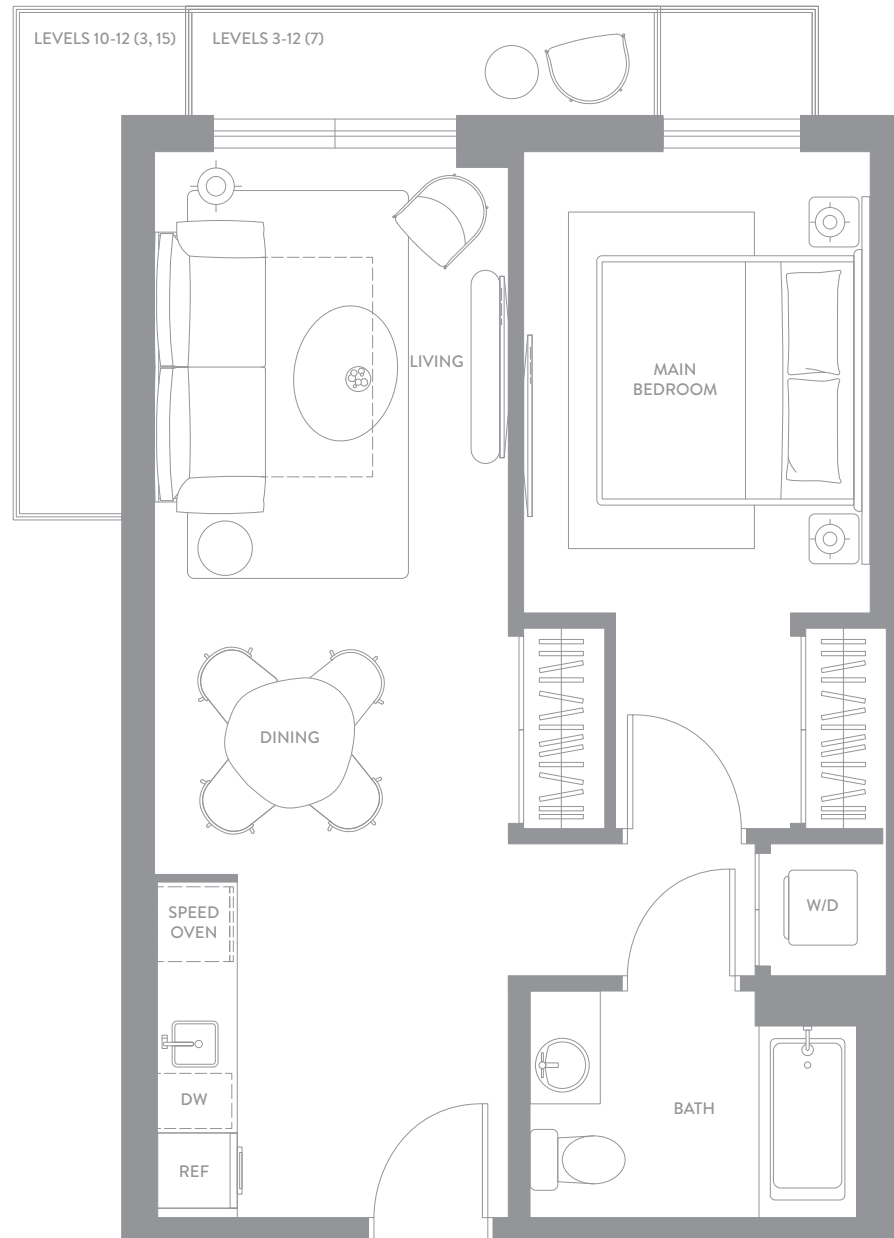
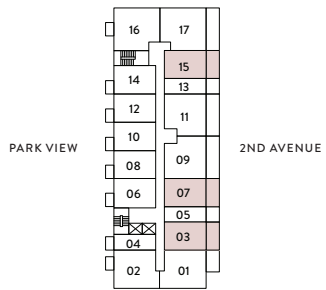
1 BEDROOM  
1 BATHROOM

LINES 03, 07, 15  
FLOORS 10 TO 12

INTERIOR  
600 sf | 56 m<sup>2</sup>

EXTERIOR  
34 sf | 3 m<sup>2</sup>  
103 sf | 10 m<sup>2</sup>

TOTAL  
634 sf | 59 m<sup>2</sup>  
703 sf | 66 m<sup>2</sup>



domus<sup>®</sup>  
FLATS

BRICKELL PARK

domusbrickellpark.com | 786.697.0651 | 1611 SW 2nd Avenue, Miami, FL 33129

EXCLUSIVE SALES & MARKETING BY CERVERA<sup>®</sup> REAL ESTATE • 1969 DEVELOPED BY NORTH DEVELOPMENT

ORAL REPRESENTATIONS CANNOT BE RELIED UPON AS CORRECTLY STATING THE REPRESENTATIONS OF THE DEVELOPER. FOR CORRECT REPRESENTATIONS, MAKE REFERENCE TO THIS BROCHURE AND TO THE DOCUMENTS REQUIRED BY SECTION 718.503, FLORIDA STATUTES, TO BE FURNISHED BY A DEVELOPER TO A BUYER OR LESSEE. Stated square footages and dimensions of residences are measured to the exterior boundaries of the exterior walls and the centerline of interior demising walls between units and in fact vary from the square footages and dimensions that would be determined by using the description and definition of the "Unit" set forth in the Declaration of Condominium, which generally only includes the interior airspace between the perimeter walls and excludes all interior structural components and other common elements. The method of measurement used in these materials is generally used in sales materials and is provided to allow a prospective buyer to compare the Units with units in other projects that utilize the same method. Refer to Exhibit "2" to the Declaration of Condominium for the unit dimensions calculated based on the description and definition of the "Unit" set forth in the Declaration. Terraces are not part of the Unit. Measurements of rooms set forth on this floor plan are generally taken at the farthest points of each given room (as described above and as if the room were a perfect rectangle), without regard for any cutouts or variations. Accordingly, the interior air space dimensions of the actual room will typically be smaller than the product obtained by multiplying the stated length and width. All measurements are estimates based on preliminary plans and will vary with actual construction. All floor plans, specifications and other development plans are proposed and conceptual only, and are subject to change and will not necessarily accurately reflect the final plans and specifications.

# UNIT E

1 BEDROOM  
1 BATHROOM

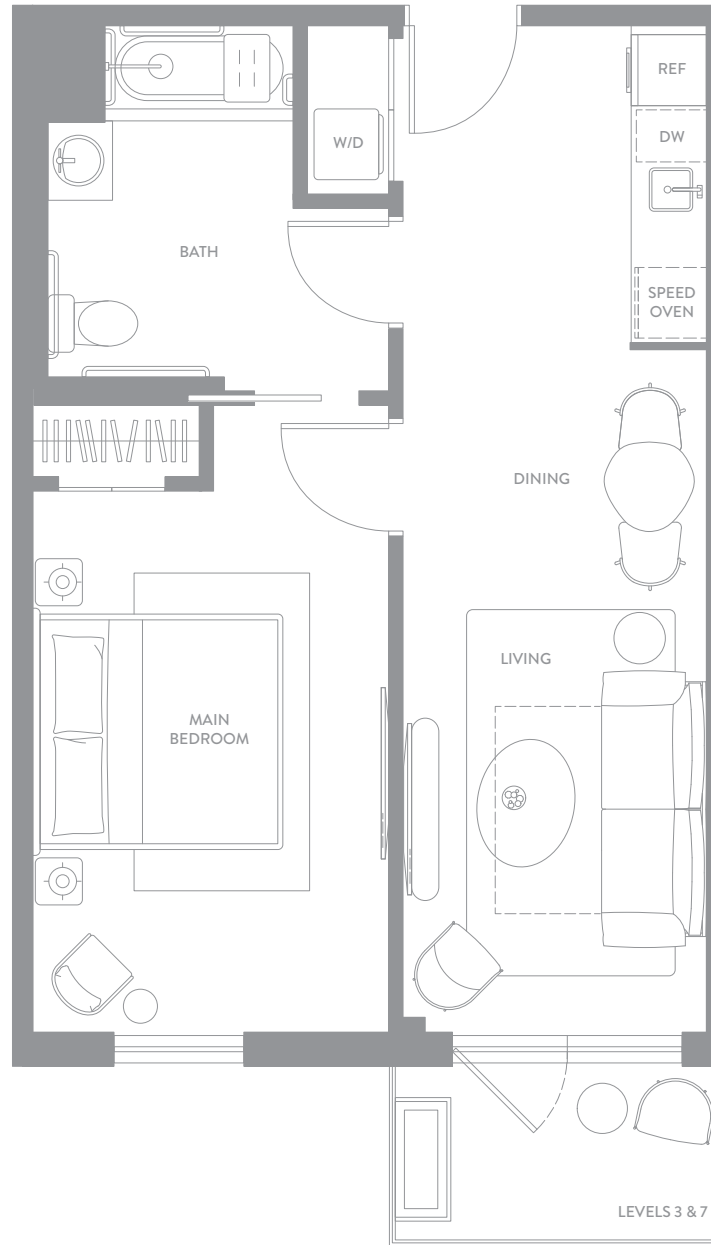
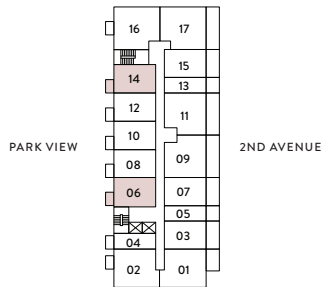
ADA UNIT

UNITS 314 AND 706

INTERIOR  
600 sf | 56 m<sup>2</sup>

EXTERIOR  
57 sf | 5 m<sup>2</sup>

TOTAL  
657 sf | 61 m<sup>2</sup>



domus<sup>®</sup>

F L A T S

BRICKELL PARK

domusbrickellpark.com | 786.697.0651 | 1611 SW 2nd Avenue, Miami, FL 33129

EXCLUSIVE SALES & MARKETING BY CERVERA<sup>®</sup> DEVELOPED BY NORTH  
REAL ESTATE • 1969 DEVELOPMENT

ORAL REPRESENTATIONS CANNOT BE RELIED UPON AS CORRECTLY STATING THE REPRESENTATIONS OF THE DEVELOPER. FOR CORRECT REPRESENTATIONS, MAKE REFERENCE TO THIS BROCHURE AND TO THE DOCUMENTS REQUIRED BY SECTION 718.503, FLORIDA STATUTES, TO BE FURNISHED BY A DEVELOPER TO A BUYER OR LESSEE. Stated square footages and dimensions of residences are measured to the exterior boundaries of the exterior walls and the centerline of interior demising walls between units and in fact vary from the square footages and dimensions that would be determined by using the description and definition of the "Unit" set forth in the Declaration of Condominium, which generally only includes the interior airspace between the perimeter walls and excludes all interior structural components and other common elements. The method of measurement used in these materials is generally used in sales materials and is provided to allow a prospective buyer to compare the Units with units in other projects that utilize the same method. Refer to Exhibit "2" to the Declaration of Condominium for the unit dimensions calculated based on the description and definition of the "Unit" set forth in the Declaration. Terraces are not part of the Unit. Measurements of rooms set forth on this floor plan are generally taken at the farthest points of each given room (as described above and as if the room were a perfect rectangle), without regard for any cutouts or variations. Accordingly, the interior air space dimensions of the actual room will typically be smaller than the product obtained by multiplying the stated length and width. All measurements are estimates based on preliminary plans and will vary with actual construction. All floor plans, specifications and other development plans are proposed and conceptual only, and are subject to change and will not necessarily accurately reflect the final plans and specifications.

# EAST UNIT D

1 BEDROOM  
1 BATHROOM

LINES 08, 10, 12  
FLOORS 02 TO 12

INTERIOR  
576 sf | 54 m<sup>2</sup>

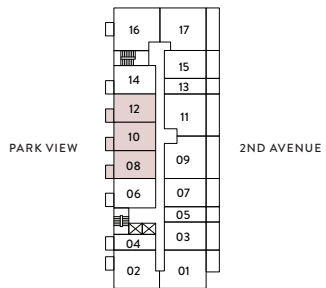
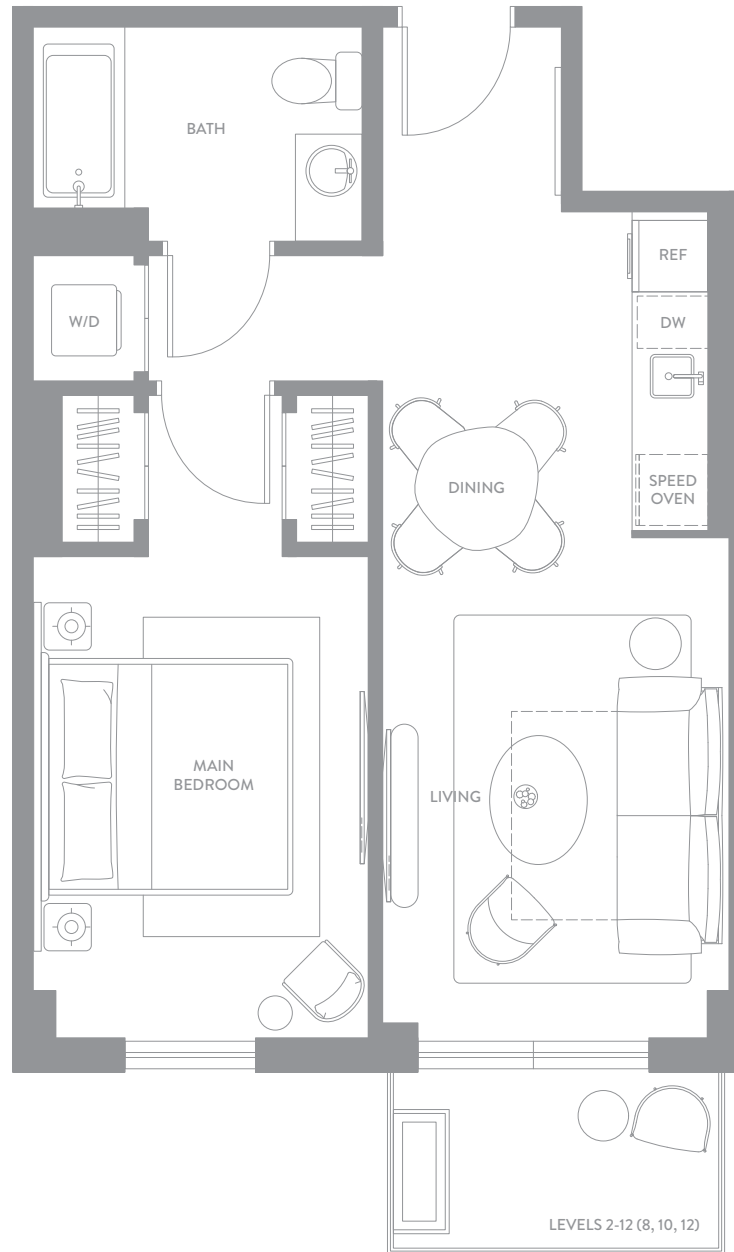
EXTERIOR  
57 sf | 5 m<sup>2</sup>

TOTAL  
633 sf | 59 m<sup>2</sup>

domus<sup>®</sup>

F L A T S

BRICKELL PARK



domusbrickellpark.com | 786.697.0651 | 1611 SW 2nd Avenue, Miami, FL 33129

EXCLUSIVE SALES & MARKETING BY **CERVERA<sup>®</sup>** REAL ESTATE • 1969 DEVELOPED BY **NORTH DEVELOPMENT**

ORAL REPRESENTATIONS CANNOT BE RELIED UPON AS CORRECTLY STATING THE REPRESENTATIONS OF THE DEVELOPER. FOR CORRECT REPRESENTATIONS, MAKE REFERENCE TO THIS BROCHURE AND TO THE DOCUMENTS REQUIRED BY SECTION 718.503, FLORIDA STATUTES, TO BE FURNISHED BY A DEVELOPER TO A BUYER OR LESSEE. Stated square footages and dimensions of residences are measured to the exterior boundaries of the exterior walls and the centerline of interior demising walls between units and in fact vary from the square footages and dimensions that would be determined by using the description and definition of the "Unit" set forth in the Declaration of Condominium, which generally only includes the interior airspace between the perimeter walls and excludes all interior structural components and other common elements. The method of measurement used in these materials is generally used in sales materials and is provided to allow a prospective buyer to compare the Units with units in other projects that utilize the same method. Refer to Exhibit "2" to the Declaration of Condominium for the unit dimensions calculated based on the description and definition of the "Unit" set forth in the Declaration. Terraces are not part of the Unit. Measurements of rooms set forth on this floor plan are generally taken at the farthest points of each given room (as described above and as if the room were a perfect rectangle), without regard for any cutouts or variations. Accordingly, the interior air space dimensions of the actual room will typically be smaller than the product obtained by multiplying the stated length and width. All measurements are estimates based on preliminary plans and will vary with actual construction. All floor plans, specifications and other development plans are proposed and conceptual only, and are subject to change and will not necessarily accurately reflect the final plans and specifications.



# EAST UNIT D

1 BEDROOM  
1 BATHROOM  
ADA UNIT

UNITS 208 AND 308

INTERIOR  
579 sf | 54 m<sup>2</sup>

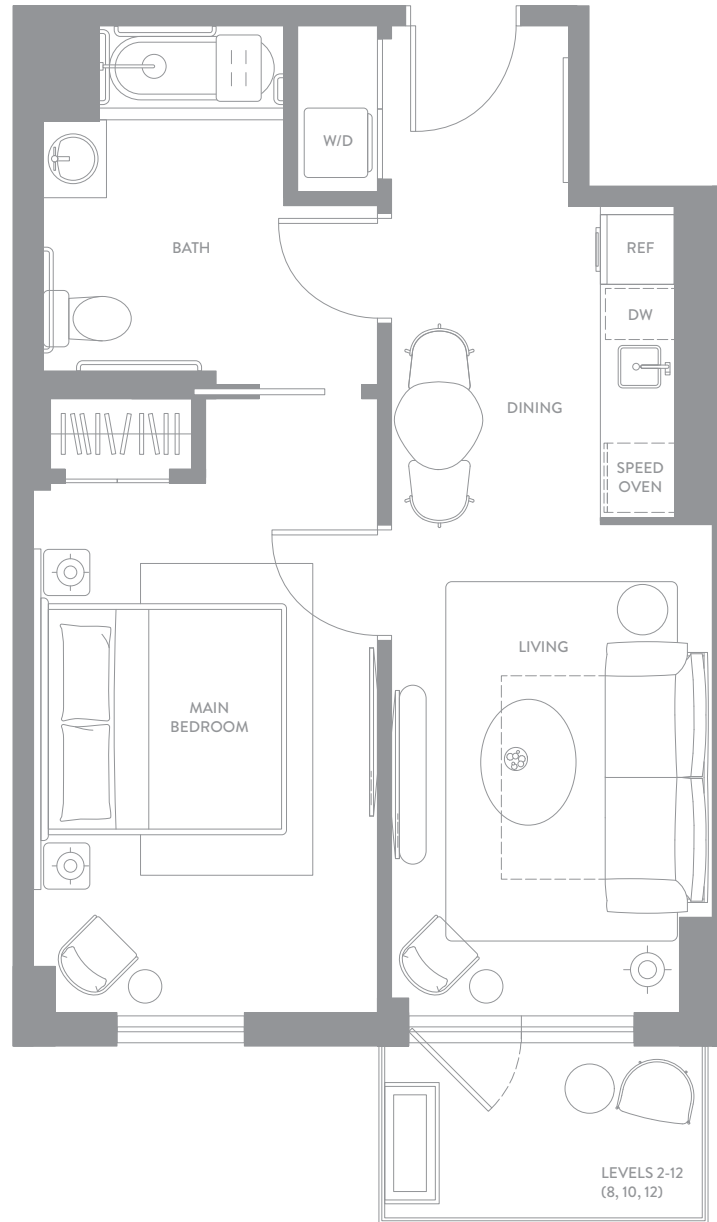
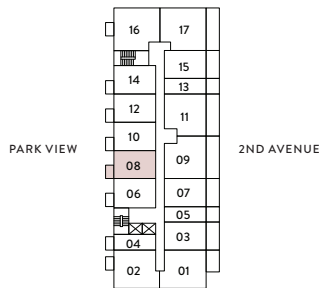
EXTERIOR  
57 sf | 5 m<sup>2</sup>

TOTAL  
636 sf | 59 m<sup>2</sup>

domus<sup>®</sup>

FLATS

BRICKELL PARK



domusbrickellpark.com | 786.697.0651 | 1611 SW 2nd Avenue, Miami, FL 33129

EXCLUSIVE SALES & MARKETING BY **CERVERA<sup>®</sup>** REAL ESTATE • 1969 DEVELOPED BY **NORTH DEVELOPMENT**

® ORAL REPRESENTATIONS CANNOT BE RELIED UPON AS CORRECTLY STATING THE REPRESENTATIONS OF THE DEVELOPER. FOR CORRECT REPRESENTATIONS, MAKE REFERENCE TO THIS BROCHURE AND TO THE DOCUMENTS REQUIRED BY SECTION 718.503, FLORIDA STATUTES, TO BE FURNISHED BY A DEVELOPER TO A BUYER OR LESSEE. Stated square footages and dimensions of residences are measured to the exterior boundaries of the exterior walls and the centerline of interior demising walls between units and in fact vary from the square footages and dimensions that would be determined by using the description and definition of the "Unit" set forth in the Declaration of Condominium, which generally only includes the interior airspace between the perimeter walls and excludes all interior structural components and other common elements. The method of measurement used in these materials is generally used in sales materials and is provided to allow a prospective buyer to compare the Units with units in other projects that utilize the same method. Refer to Exhibit "2" to the Declaration of Condominium for the unit dimensions calculated based on the description and definition of the "Unit" set forth in the Declaration. Terraces are not part of the Unit. Measurements of rooms set forth on this floor plan are generally taken at the farthest points of each given room (as described above and as if the room were a perfect rectangle), without regard for any cutouts or variations. Accordingly, the interior air space dimensions of the actual room will typically be smaller than the product obtained by multiplying the stated length and width. All measurements are estimates based on preliminary plans and will vary with actual construction. All floor plans, specifications and other development plans are proposed and conceptual only, and are subject to change and will not necessarily accurately reflect the final plans and specifications.

# EAST UNIT C

1 BEDROOM + DEN  
2 BATHROOMS

LINE 02  
FLOORS 02 TO 08

INTERIOR  
860 sf | 80 m<sup>2</sup>

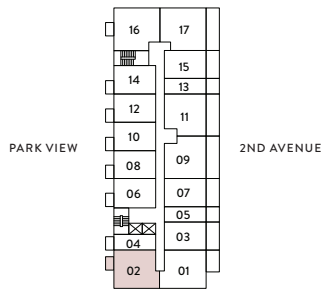
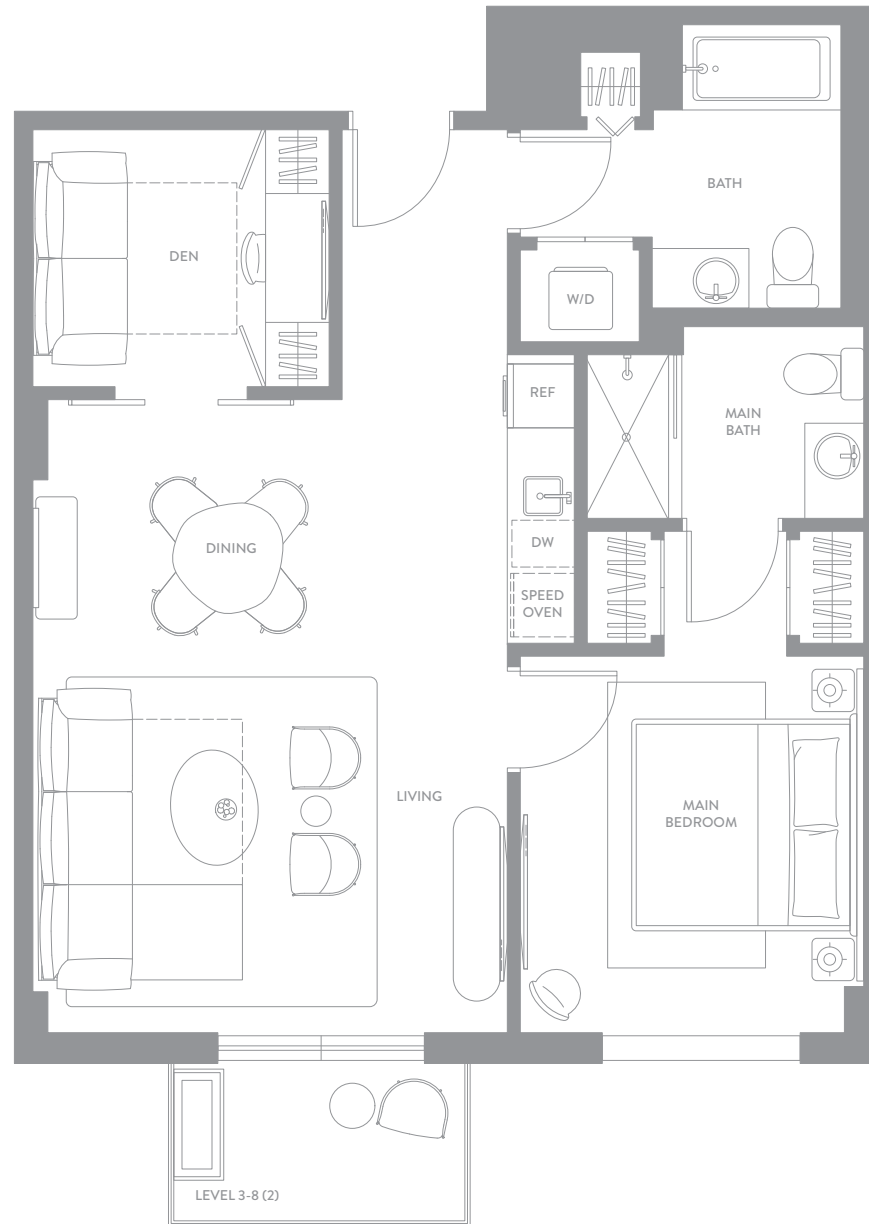
EXTERIOR  
57 sf | 5 m<sup>2</sup>

TOTAL  
917 sf | 85 m<sup>2</sup>

domus<sup>®</sup>

FLATS

BRICKELL PARK



domusbrickellpark.com | 786.697.0651 | 1611 SW 2nd Avenue, Miami, FL 33129

EXCLUSIVE SALES & MARKETING BY **CERVERA<sup>®</sup>** REAL ESTATE • 1969 DEVELOPED BY **NORTH DEVELOPMENT**

ORAL REPRESENTATIONS CANNOT BE RELIED UPON AS CORRECTLY STATING THE REPRESENTATIONS OF THE DEVELOPER. FOR CORRECT REPRESENTATIONS, MAKE REFERENCE TO THIS BROCHURE AND TO THE DOCUMENTS REQUIRED BY SECTION 718.503, FLORIDA STATUTES, TO BE FURNISHED BY A DEVELOPER TO A BUYER OR LESSEE. Stated square footages and dimensions of residences are measured to the exterior boundaries of the exterior walls and the centerline of interior demising walls between units and in fact vary from the square footages and dimensions that would be determined by using the description and definition of the "Unit" set forth in the Declaration of Condominium, which generally only includes the interior airspace between the perimeter walls and excludes all interior structural components and other common elements. The method of measurement used in these materials is generally used in sales materials and is provided to allow a prospective buyer to compare the Units with units in other projects that utilize the same method. Refer to Exhibit "2" to the Declaration of Condominium for the unit dimensions calculated based on the description and definition of the "Unit" set forth in the Declaration. Terraces are not part of the Unit. Measurements of rooms set forth on this floor plan are generally taken at the farthest points of each given room (as described above and as if the room were a perfect rectangle), without regard for any cutouts or variations. Accordingly, the interior air space dimensions of the actual room will typically be smaller than the product obtained by multiplying the stated length and width. All measurements are estimates based on preliminary plans and will vary with actual construction. All floor plans, specifications and other development plans are proposed and conceptual only, and are subject to change and will not necessarily accurately reflect the final plans and specifications.

# WEST UNIT C

1 BEDROOM + DEN  
2 BATHROOMS

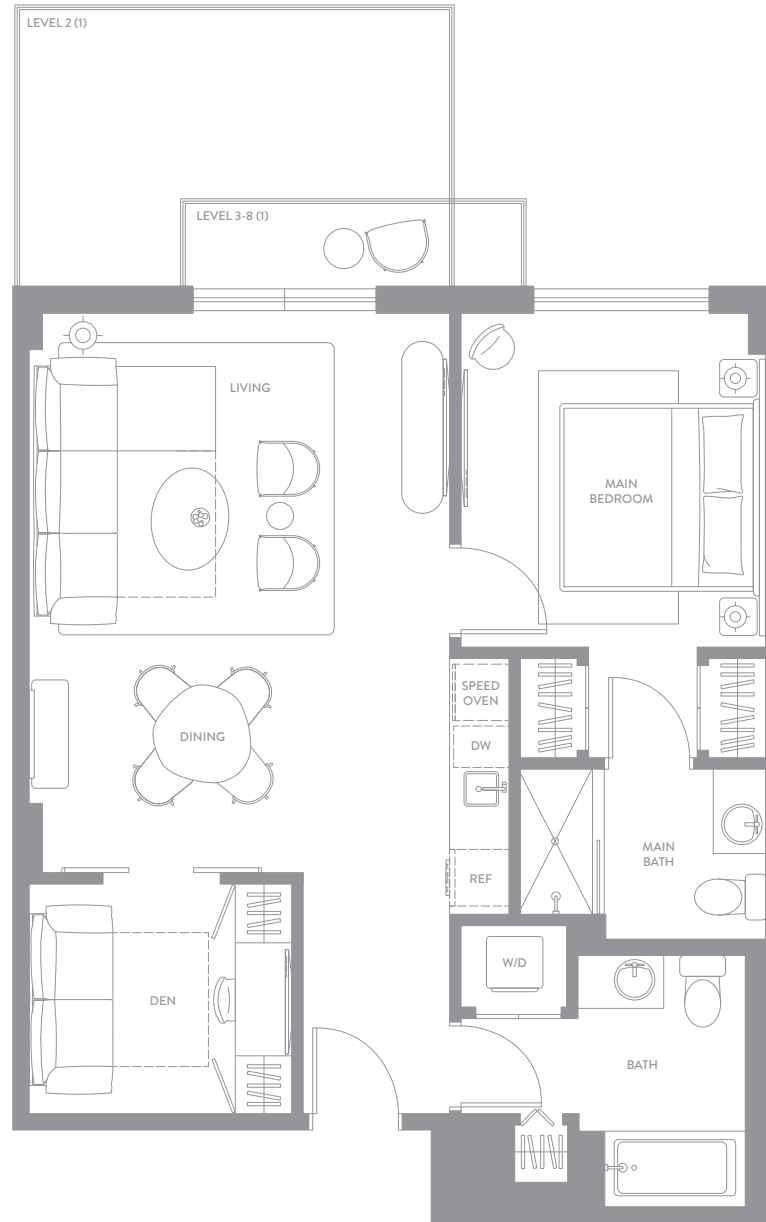
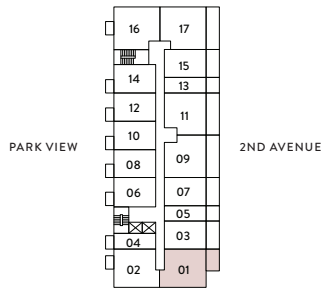
LINE 01  
FLOORS 02 TO 08

INTERIOR  
860 sf | 80 m<sup>2</sup>

EXTERIOR  
38 sf | 4 m<sup>2</sup>

TOTAL  
898 sf | 84 m<sup>2</sup>

2nd Floor Exterior  
146 sf | 14 m<sup>2</sup>



domus<sup>®</sup>  
FLATS

BRICKELL PARK

domusbrickellpark.com | 786.697.0651 | 1611 SW 2nd Avenue, Miami, FL 33129

EXCLUSIVE SALES & MARKETING BY **CERVERA<sup>®</sup>** REAL ESTATE • 1969 DEVELOPED BY **NORTH DEVELOPMENT**

® ORAL REPRESENTATIONS CANNOT BE RELIED UPON AS CORRECTLY STATING THE REPRESENTATIONS OF THE DEVELOPER. FOR CORRECT REPRESENTATIONS, MAKE REFERENCE TO THIS BROCHURE AND TO THE DOCUMENTS REQUIRED BY SECTION 718.503, FLORIDA STATUTES, TO BE FURNISHED BY A DEVELOPER TO A BUYER OR LESSEE. Stated square footages and dimensions of residences are measured to the exterior boundaries of the exterior walls and the centerline of interior demising walls between units and in fact vary from the square footages and dimensions that would be determined by using the description and definition of the "Unit" set forth in the Declaration of Condominium, which generally only includes the interior airspace between the perimeter walls and excludes all interior structural components and other common elements. The method of measurement used in these materials is generally used in sales materials and is provided to allow a prospective buyer to compare the Units with units in other projects that utilize the same method. Refer to Exhibit "2" to the Declaration of Condominium for the unit dimensions calculated based on the description and definition of the "Unit" set forth in the Declaration. Terraces are not part of the Unit. Measurements of rooms set forth on this floor plan are generally taken at the farthest points of each given room (as described above and as if the room were a perfect rectangle), without regard for any cutouts or variations. Accordingly, the interior air space dimensions of the actual room will typically be smaller than the product obtained by multiplying the stated length and width. All measurements are estimates based on preliminary plans and will vary with actual construction. All floor plans, specifications and other development plans are proposed and conceptual only, and are subject to change and will not necessarily accurately reflect the final plans and specifications.

# EAST UNIT C

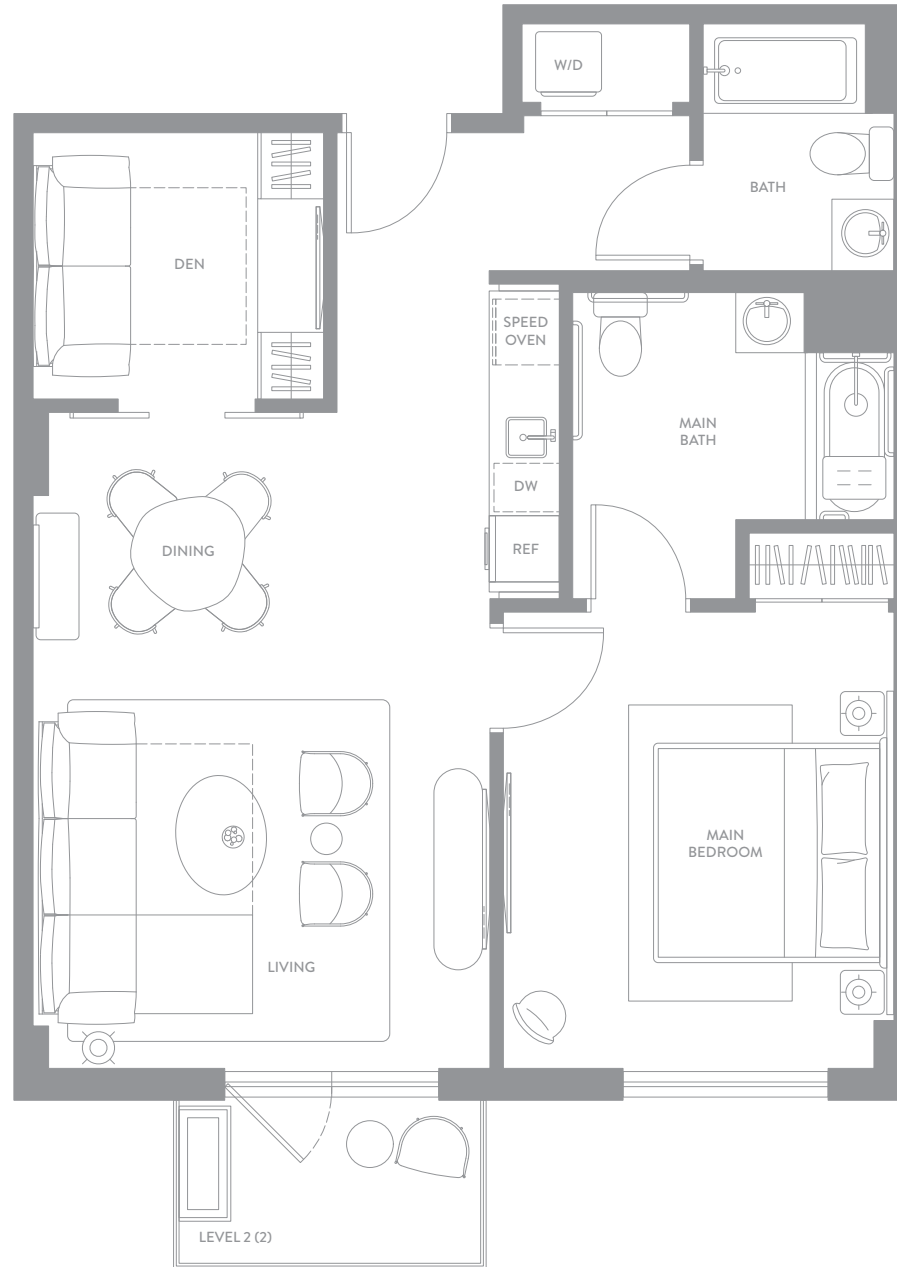
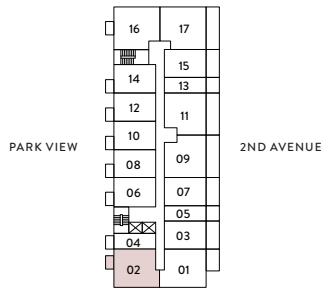
1 BEDROOM + DEN  
2 BATHROOMS  
ADA UNIT

UNIT 202

INTERIOR  
860 sf | 80 m<sup>2</sup>

EXTERIOR  
57 sf | 5 m<sup>2</sup>

TOTAL  
917 sf | 85 m<sup>2</sup>



domus<sup>®</sup>

F L A T S

BRICKELL PARK

domusbrickellpark.com | 786.697.0651 | 1611 SW 2nd Avenue, Miami, FL 33129

EXCLUSIVE SALES & MARKETING BY **CERVERA<sup>®</sup>** REAL ESTATE • 1969 DEVELOPED BY **NORTH DEVELOPMENT**

® ORAL REPRESENTATIONS CANNOT BE RELIED UPON AS CORRECTLY STATING THE REPRESENTATIONS OF THE DEVELOPER. FOR CORRECT REPRESENTATIONS, MAKE REFERENCE TO THIS BROCHURE AND TO THE DOCUMENTS REQUIRED BY SECTION 718.503, FLORIDA STATUTES, TO BE FURNISHED BY A DEVELOPER TO A BUYER OR LESSEE. Stated square footages and dimensions of residences are measured to the exterior boundaries of the exterior walls and the centerline of interior demising walls between units and in fact vary from the square footages and dimensions that would be determined by using the description and definition of the "Unit" set forth in the Declaration of Condominium, which generally only includes the interior airspace between the perimeter walls and excludes all interior structural components and other common elements. The method of measurement used in these materials is generally used in sales materials and is provided to allow a prospective buyer to compare the Units with units in other projects that utilize the same method. Refer to Exhibit "2" to the Declaration of Condominium for the unit dimensions calculated based on the description and definition of the "Unit" set forth in the Declaration. Terraces are not part of the Unit. Measurements of rooms set forth on this floor plan are generally taken at the farthest points of each given room (as described above and as if the room were a perfect rectangle), without regard for any cutouts or variations. Accordingly, the interior air space dimensions of the actual room will typically be smaller than the product obtained by multiplying the stated length and width. All measurements are estimates based on preliminary plans and will vary with actual construction. All floor plans, specifications and other development plans are proposed and conceptual only, and are subject to change and will not necessarily accurately reflect the final plans and specifications.

# WEST UNIT B

2 BEDROOMS  
2 BATHROOMS

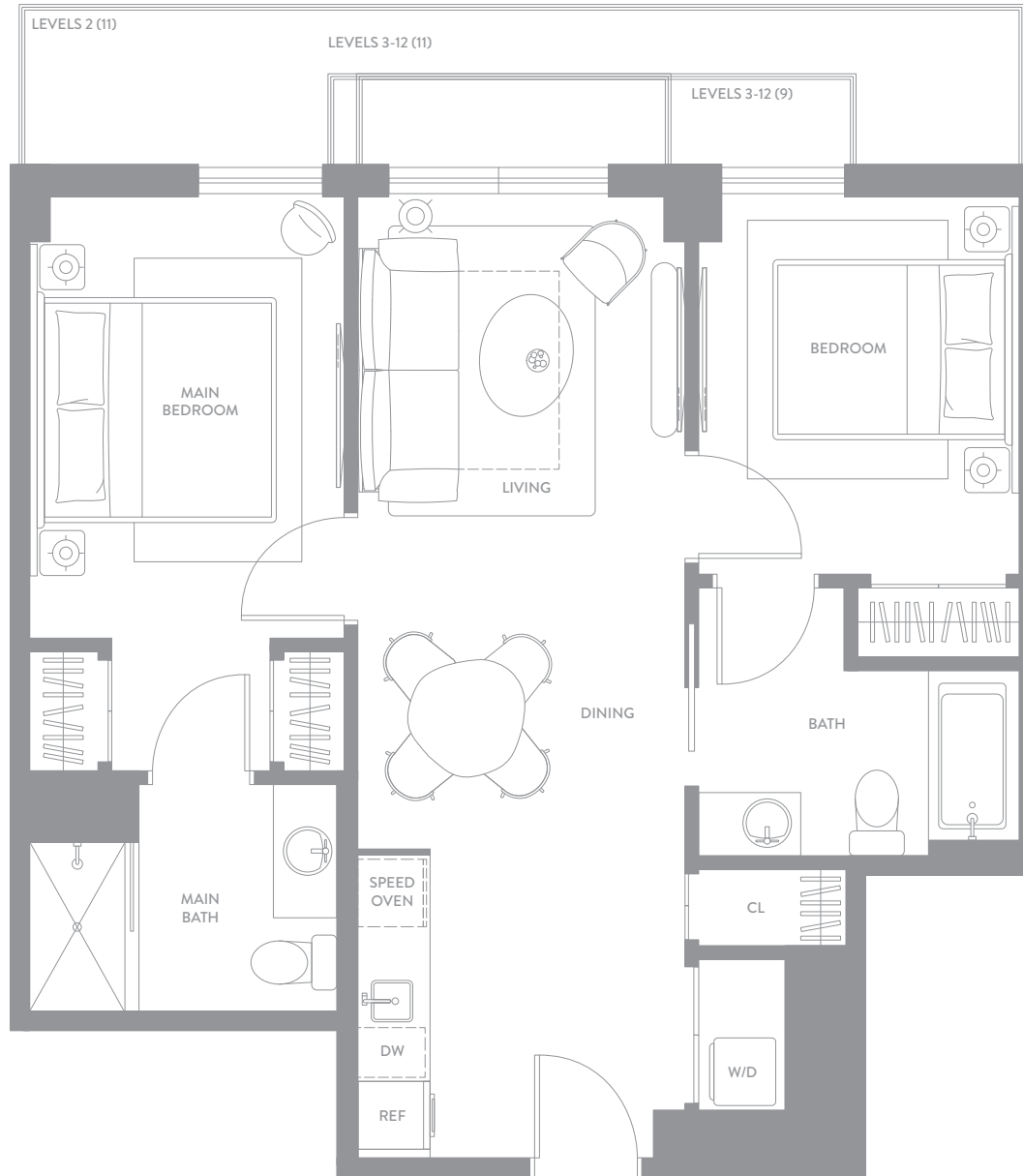
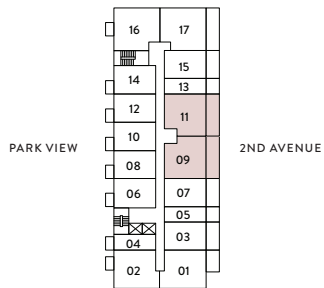
LINES 09 & 11  
FLOORS 02 TO 12

INTERIOR  
800 sf | 75 m<sup>2</sup>

EXTERIOR  
51 sf | 5 m<sup>2</sup>  
38 sf | 4 m<sup>2</sup>

TOTAL  
851 sf | 80 m<sup>2</sup>  
838 sf | 78 m<sup>2</sup>

2nd Floor Exterior  
303 sf | 28 m<sup>2</sup>



domus<sup>®</sup>

F L A T S

BRICKELL PARK

domusbrickellpark.com | 786.697.0651 | 1611 SW 2nd Avenue, Miami, FL 33129

EXCLUSIVE SALES & MARKETING BY **CERVERA<sup>®</sup>** REAL ESTATE • 1969 DEVELOPED BY **NORTH DEVELOPMENT**

® ORAL REPRESENTATIONS CANNOT BE RELIED UPON AS CORRECTLY STATING THE REPRESENTATIONS OF THE DEVELOPER. FOR CORRECT REPRESENTATIONS, MAKE REFERENCE TO THIS BROCHURE AND TO THE DOCUMENTS REQUIRED BY SECTION 718.503, FLORIDA STATUTES, TO BE FURNISHED BY A DEVELOPER TO A BUYER OR LESSEE. Stated square footages and dimensions of residences are measured to the exterior boundaries of the exterior walls and the centerline of interior demising walls between units and in fact vary from the square footages and dimensions that would be determined by using the description and definition of the "Unit" set forth in the Declaration of Condominium, which generally only includes the interior airspace between the perimeter walls and excludes all interior structural components and other common elements. The method of measurement used in these materials is generally used in sales materials and is provided to allow a prospective buyer to compare the Units with units in other projects that utilize the same method. Refer to Exhibit "2" to the Declaration of Condominium for the unit dimensions calculated based on the description and definition of the "Unit" set forth in the Declaration. Terraces are not part of the Unit. Measurements of rooms set forth on this floor plan are generally taken at the farthest points of each given room (as described above and as if the room were a perfect rectangle), without regard for any cutouts or variations. Accordingly, the interior air space dimensions of the actual room will typically be smaller than the product obtained by multiplying the stated length and width. All measurements are estimates based on preliminary plans and will vary with actual construction. All floor plans, specifications and other development plans are proposed and conceptual only, and are subject to change and will not necessarily accurately reflect the final plans and specifications.

# WEST UNIT B

2 BEDROOMS  
2 BATHROOMS  
ADA UNIT

UNIT 209

INTERIOR  
802 sf | 75 m<sup>2</sup>

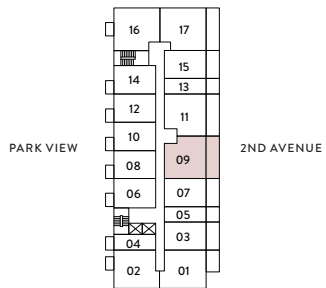
EXTERIOR  
298 sf | 28 m<sup>2</sup>

TOTAL  
1,100 sf | 103 m<sup>2</sup>

domus<sup>®</sup>

F L A T S

BRICKELL PARK



domusbrickellpark.com | 786.697.0651 | 1611 SW 2nd Avenue, Miami, FL 33129

EXCLUSIVE SALES & MARKETING BY **CERVERA<sup>®</sup>** REAL ESTATE • 1969 DEVELOPED BY **NORTH DEVELOPMENT**

ORAL REPRESENTATIONS CANNOT BE RELIED UPON AS CORRECTLY STATING THE REPRESENTATIONS OF THE DEVELOPER. FOR CORRECT REPRESENTATIONS, MAKE REFERENCE TO THIS BROCHURE AND TO THE DOCUMENTS REQUIRED BY SECTION 718.503, FLORIDA STATUTES, TO BE FURNISHED BY A DEVELOPER TO A BUYER OR LESSEE. Stated square footages and dimensions of residences are measured to the exterior boundaries of the exterior walls and the centerline of interior demising walls between units and in fact vary from the square footages and dimensions that would be determined by using the description and definition of the "Unit" set forth in the Declaration of Condominium, which generally only includes the interior airspace between the perimeter walls and excludes all interior structural components and other common elements. The method of measurement used in these materials is generally used in sales materials and is provided to allow a prospective buyer to compare the Units with units in other projects that utilize the same method. Refer to Exhibit "2" to the Declaration of Condominium for the unit dimensions calculated based on the description and definition of the "Unit" set forth in the Declaration. Terraces are not part of the Unit. Measurements of rooms set forth on this floor plan are generally taken at the farthest points of each given room (as described above and as if the room were a perfect rectangle), without regard for any cutouts or variations. Accordingly, the interior air space dimensions of the actual room will typically be smaller than the product obtained by multiplying the stated length and width. All measurements are estimates based on preliminary plans and will vary with actual construction. All floor plans, specifications and other development plans are proposed and conceptual only, and are subject to change and will not necessarily accurately reflect the final plans and specifications.

# EAST UNIT A

2 BEDROOMS  
2 BATHROOMS

LINE 16  
FLOORS 02 TO 08

INTERIOR  
947 sf | 88 m<sup>2</sup>

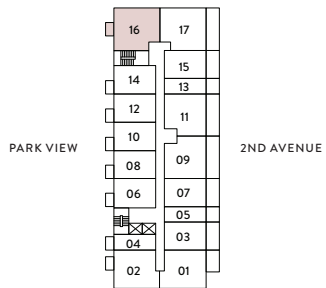
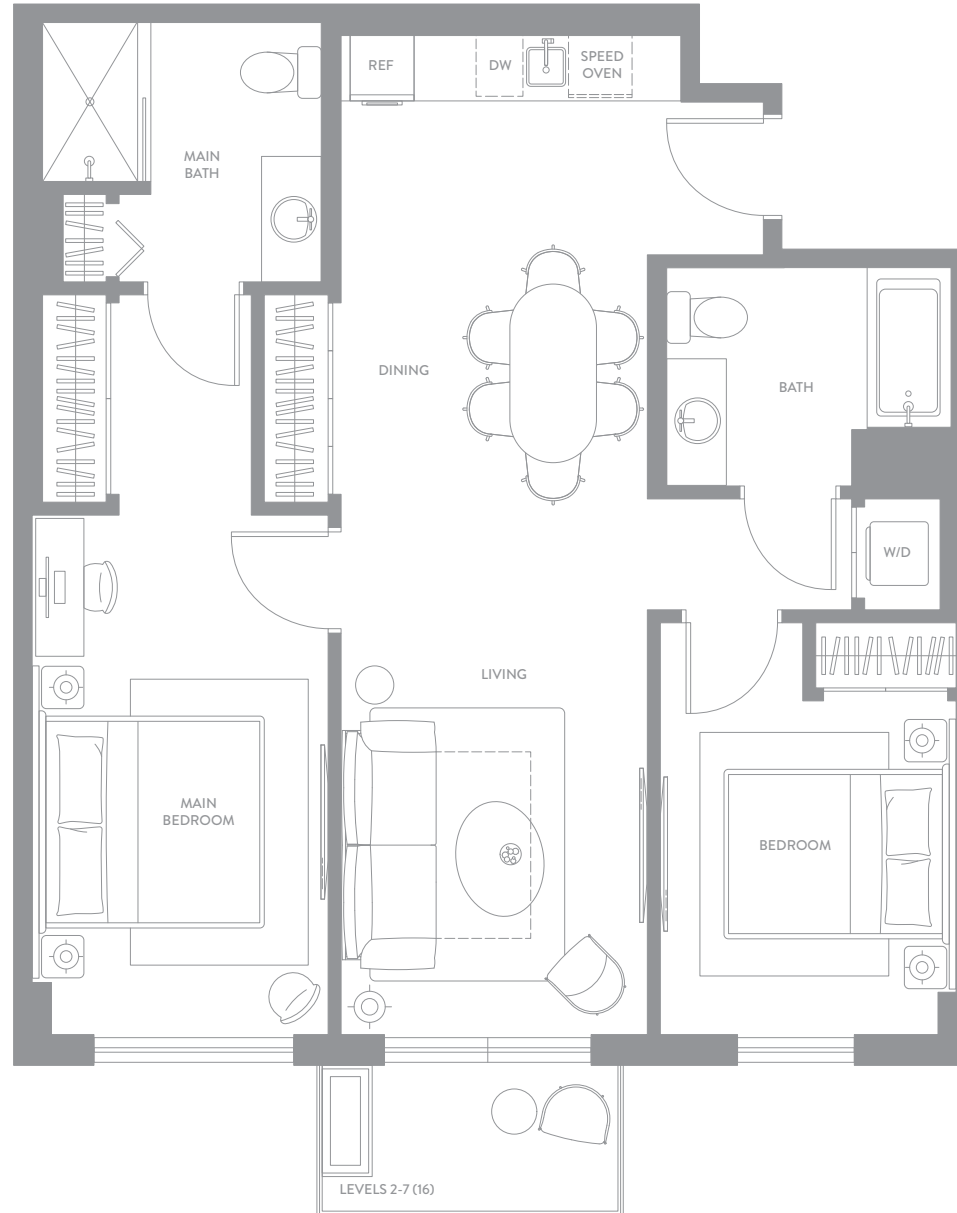
EXTERIOR  
57 sf | 5 m<sup>2</sup>

TOTAL  
1,004 sf | 93 m<sup>2</sup>

domus<sup>®</sup>

F L A T S

BRICKELL PARK



domusbrickellpark.com | 786.697.0651 | 1611 SW 2nd Avenue, Miami, FL 33129

EXCLUSIVE SALES & MARKETING BY **CERVERA<sup>®</sup>** REAL ESTATE • 1969 DEVELOPED BY **NORTH DEVELOPMENT**

® ORAL REPRESENTATIONS CANNOT BE RELIED UPON AS CORRECTLY STATING THE REPRESENTATIONS OF THE DEVELOPER. FOR CORRECT REPRESENTATIONS, MAKE REFERENCE TO THIS BROCHURE AND TO THE DOCUMENTS REQUIRED BY SECTION 718.503, FLORIDA STATUTES, TO BE FURNISHED BY A DEVELOPER TO A BUYER OR LESSEE. Stated square footages and dimensions of residences are measured to the exterior boundaries of the exterior walls and the centerline of interior demising walls between units and in fact vary from the square footages and dimensions that would be determined by using the description and definition of the "Unit" set forth in the Declaration of Condominium, which generally only includes the interior airspace between the perimeter walls and excludes all interior structural components and other common elements. The method of measurement used in these materials is generally used in sales materials and is provided to allow a prospective buyer to compare the Units with units in other projects that utilize the same method. Refer to Exhibit "2" to the Declaration of Condominium for the unit dimensions calculated based on the description and definition of the "Unit" set forth in the Declaration. Terraces are not part of the Unit. Measurements of rooms set forth on this floor plan are generally taken at the farthest points of each given room (as described above and as if the room were a perfect rectangle), without regard for any cutouts or variations. Accordingly, the interior air space dimensions of the actual room will typically be smaller than the product obtained by multiplying the stated length and width. All measurements are estimates based on preliminary plans and will vary with actual construction. All floor plans, specifications and other development plans are proposed and conceptual only, and are subject to change and will not necessarily accurately reflect the final plans and specifications.

# WEST UNIT A

2 BEDROOMS  
2 BATHROOMS

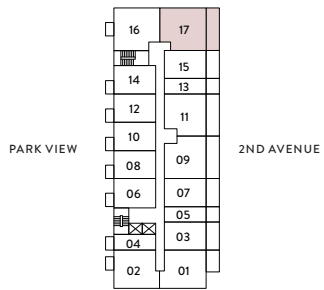
LINE 17  
FLOORS 02 TO 08

INTERIOR  
947 sf | 88 m<sup>2</sup>

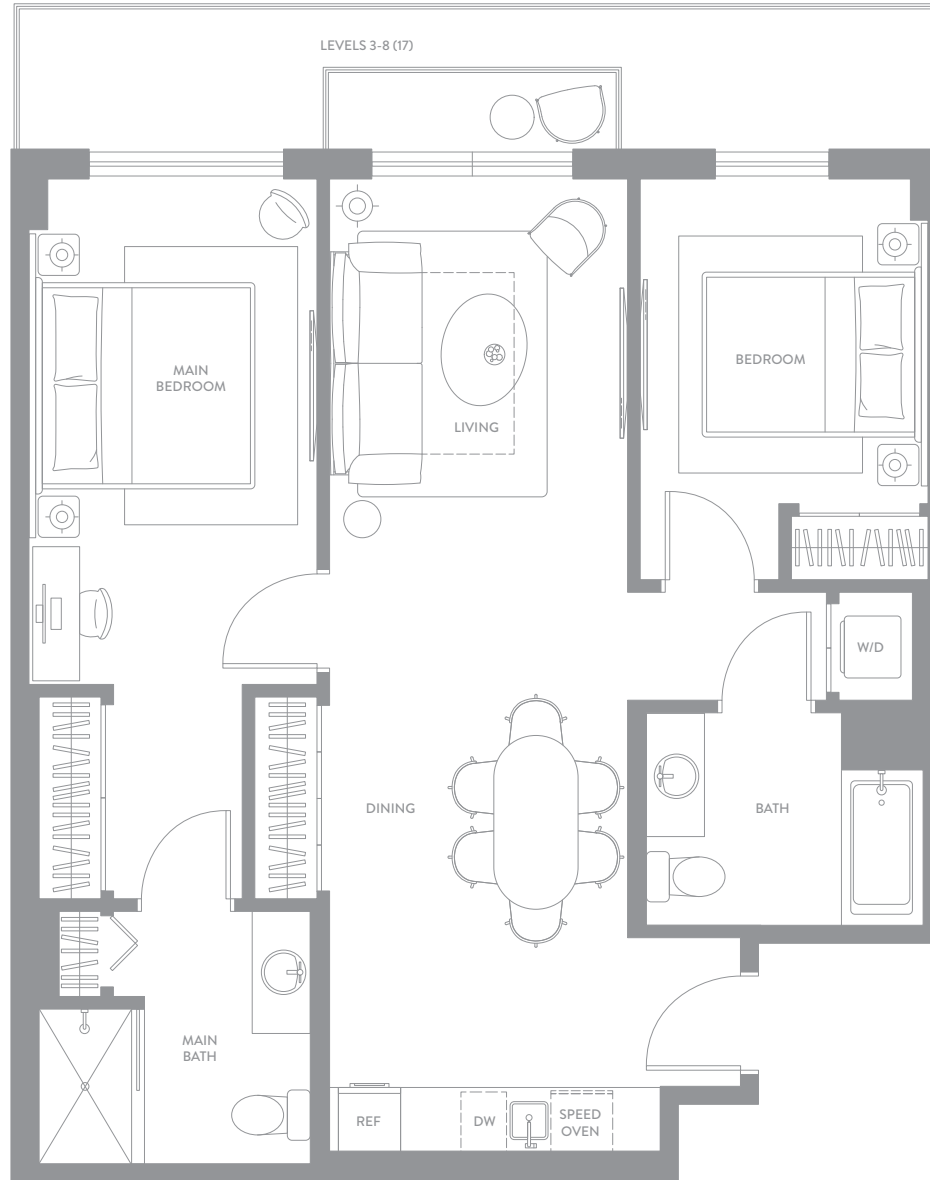
EXTERIOR  
30 sf | 3 m<sup>2</sup>

TOTAL  
977 sf | 91 m<sup>2</sup>

2nd Floor Exterior  
301 sf | 28 m<sup>2</sup>



LEVELS 2 (17)



domus<sup>®</sup>

F L A T S

BRICKELL PARK

domusbrickellpark.com | 786.697.0651 | 1611 SW 2nd Avenue, Miami, FL 33129

EXCLUSIVE SALES & MARKETING BY **CERVERA<sup>®</sup>** REAL ESTATE • 1969 DEVELOPED BY **NORTH DEVELOPMENT**

ORAL REPRESENTATIONS CANNOT BE RELIED UPON AS CORRECTLY STATING THE REPRESENTATIONS OF THE DEVELOPER. FOR CORRECT REPRESENTATIONS, MAKE REFERENCE TO THIS BROCHURE AND TO THE DOCUMENTS REQUIRED BY SECTION 718.503, FLORIDA STATUTES, TO BE FURNISHED BY A DEVELOPER TO A BUYER OR LESSEE. Stated square footages and dimensions of residences are measured to the exterior boundaries of the exterior walls and the centerline of interior demising walls between units and in fact vary from the square footages and dimensions that would be determined by using the description and definition of the "Unit" set forth in the Declaration of Condominium, which generally only includes the interior airspace between the perimeter walls and excludes all interior structural components and other common elements. The method of measurement used in these materials is generally used in sales materials and is provided to allow a prospective buyer to compare the Units with units in other projects that utilize the same method. Refer to Exhibit "2" to the Declaration of Condominium for the unit dimensions calculated based on the description and definition of the "Unit" set forth in the Declaration. Terraces are not part of the Unit. Measurements of rooms set forth on this floor plan are generally taken at the farthest points of each given room (as described above and as if the room were a perfect rectangle), without regard for any cutouts or variations. Accordingly, the interior air space dimensions of the actual room will typically be smaller than the product obtained by multiplying the stated length and width. All measurements are estimates based on preliminary plans and will vary with actual construction. All floor plans, specifications and other development plans are proposed and conceptual only, and are subject to change and will not necessarily accurately reflect the final plans and specifications.



# EAST UNIT A

2 BEDROOMS  
2 BATHROOMS  
ADA UNIT

UNIT 816

INTERIOR  
947 sf | 88 m<sup>2</sup>

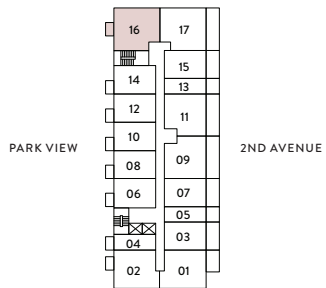
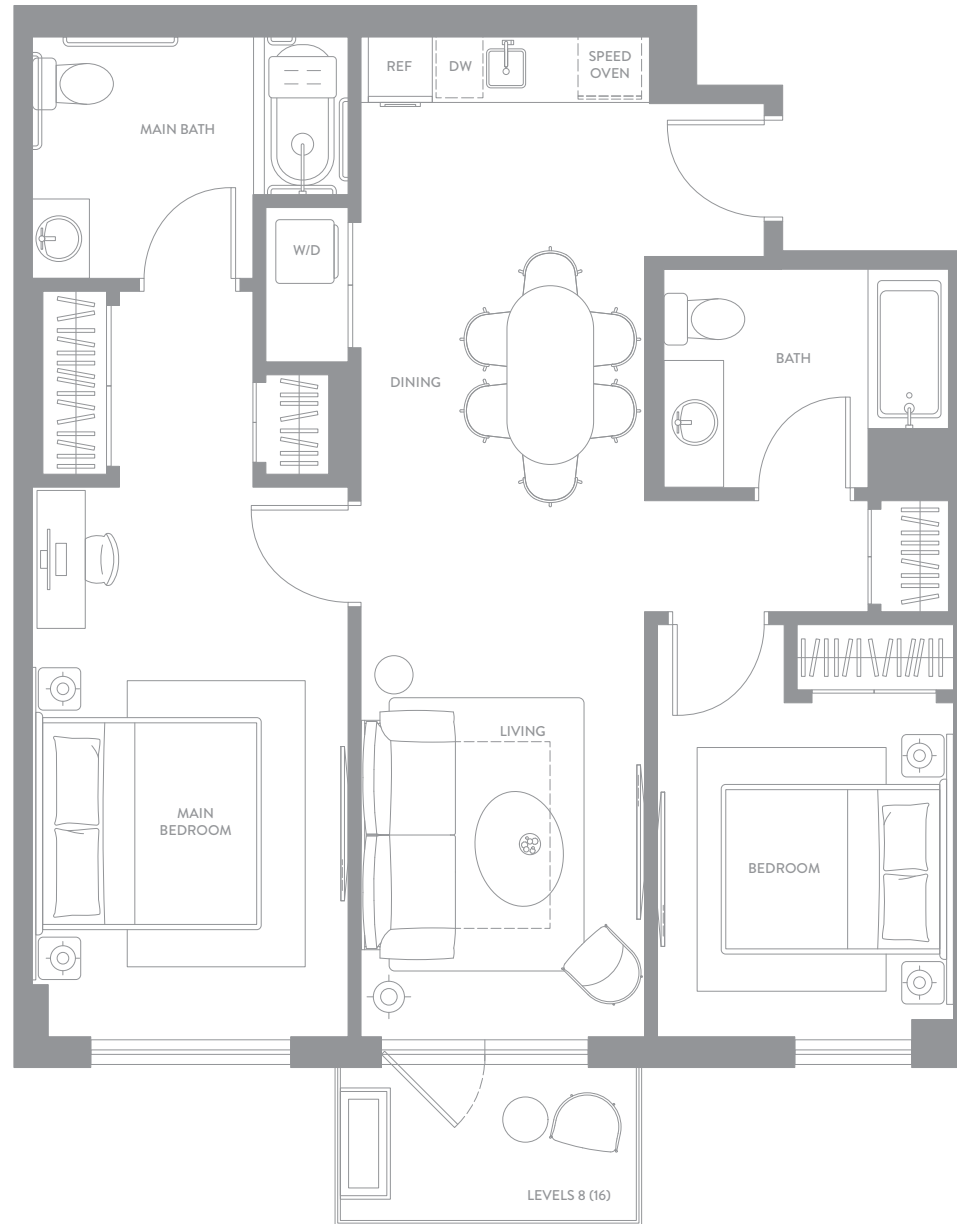
EXTERIOR  
57 sf | 5 m<sup>2</sup>

TOTAL  
1,004 sf | 93 m<sup>2</sup>

domus<sup>®</sup>

F L A T S

BRICKELL PARK



domusbrickellpark.com | 786.697.0651 | 1611 SW 2nd Avenue, Miami, FL 33129

EXCLUSIVE SALES & MARKETING BY **CERVERA<sup>®</sup>** REAL ESTATE • 1969 DEVELOPED BY **NORTH DEVELOPMENT**

ORAL REPRESENTATIONS CANNOT BE RELIED UPON AS CORRECTLY STATING THE REPRESENTATIONS OF THE DEVELOPER. FOR CORRECT REPRESENTATIONS, MAKE REFERENCE TO THIS BROCHURE AND TO THE DOCUMENTS REQUIRED BY SECTION 718.503, FLORIDA STATUTES, TO BE FURNISHED BY A DEVELOPER TO A BUYER OR LESSEE. Stated square footages and dimensions of residences are measured to the exterior boundaries of the exterior walls and the centerline of interior demising walls between units and in fact vary from the square footages and dimensions that would be determined by using the description and definition of the "Unit" set forth in the Declaration of Condominium, which generally only includes the interior airspace between the perimeter walls and excludes all interior structural components and other common elements. The method of measurement used in these materials is generally used in sales materials and is provided to allow a prospective buyer to compare the Units with units in other projects that utilize the same method. Refer to Exhibit "2" to the Declaration of Condominium for the unit dimensions calculated based on the description and definition of the "Unit" set forth in the Declaration. Terraces are not part of the Unit. Measurements of rooms set forth on this floor plan are generally taken at the farthest points of each given room (as described above and as if the room were a perfect rectangle), without regard for any cutouts or variations. Accordingly, the interior air space dimensions of the actual room will typically be smaller than the product obtained by multiplying the stated length and width. All measurements are estimates based on preliminary plans and will vary with actual construction. All floor plans, specifications and other development plans are proposed and conceptual only, and are subject to change and will not necessarily accurately reflect the final plans and specifications.